

# TRUSSCORE™ vs. FRP

Suitable for both wall and ceiling applications, **TRUSSCORE™ PVC Interlocking Liner Panels** are an ideal alternative to **FRP (Fiberglass Reinforced Panels)**. TRUSSCORE panels meet and/or exceed modern hygienic construction and statutory building codes. Made from 100% virgin PVC, TRUSSCORE'S tongue-and-groove interlocking system makes both vertical and horizontal installation quick and easy. TRUSSCORE panels provide excellent light reflectance and will not yellow, delaminate, warp, or swell. These panels will last and stay looking good for years!

## Case Study: GVC Bean | Inland Empire Foods

Panel	Sheet	Width (Inches)	Length (Feet)	Sqft (Total Project)	Trim	Adhesive	Panel	Labor	Total Cost	Post 10Yr Cost	Life Cycle Savings
<b>FRP</b> (Class C, Pebbled)	1875	48"	8'	60,000'	\$7,500	\$21,000	\$75,000	\$53,940	\$157,440	<b>\$314,880</b> (Requires replacement after approx. 3 - 5 years)	N/A
<b>Trusscore</b> (Class A, Smooth)	2250	16"	20'	60,000'	\$9,960	\$0	\$99,600	\$26,940	\$136,500 (Savings of \$20,940)	<b>\$136,500</b> (No replacement for 10+ years when subject to normal and proper use)	<b>\$178,380</b> (10+ year Warranty)

(Case study completed in January of 2016)



### TRUSSCORE™ versus FRP

When compared to Fiberglass Reinforced Panels, Trusscore's durable surface is not only scratch resistant but 100% moisture resistant and low maintenance. Trusscore PVC wall and ceiling panels meet CFIA and FDA requirements. Trust it for your most demanding projects!

### What are the advantages of TRUSSCORE™ over FRP?

- Easy to install interlocking design
- Pre-punched nailing flange
- Bright white, reflective surface
- No discoloration or delamination
- Meets CFIA, FDA & USDA requirements
- Class A fire rating, non-flammable
- Waste material is 100% recyclable
- Large selection of lengths available

# TRUSSCORE™ PVC Interlocking Liner Panels

## Strong, Durable, Easy Installation

TRUSSCORE™ PVC Interlocking Liner Panels have your walls and ceilings covered. TRUSSCORE™ is recommended for a wide range agricultural, industrial, commercial, and residential interior applications including:

### Agricultural

- Hog Barns
- Dairy Buildings
- Poultry Shelters
- Fisheries
- Grain Storage

### Industrial

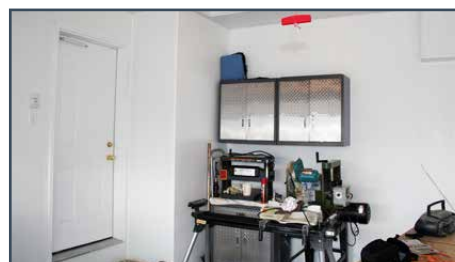
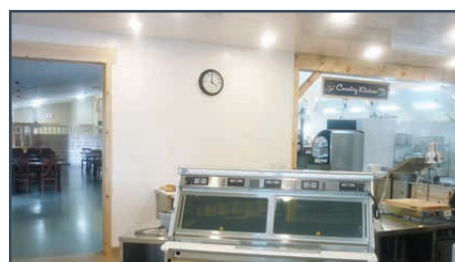
- Food Processing
- Meat Packing
- Laboratories
- Cooling Towers
- Chemical Plant

### Commercial

- Classrooms
- Hospital Rooms
- Dining Rooms
- Restaurants
- Recreational Areas



### Residential

- Workshops
- Garages
- Kennels
- Riding Stables
- Home Office

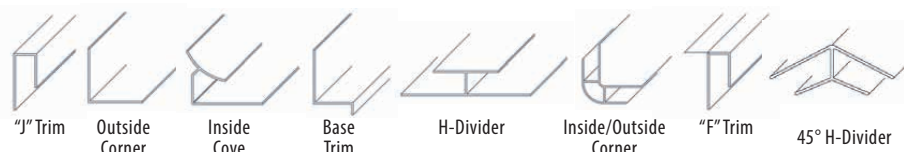


*"Excellent light reflectance"*

### PRODUCT SPECIFICATIONS

<b>Profile:</b>		
Panel Width:	16" w/Industry Leading 1/2" Thick Heavy Wall Design	
Panel Length:	8', 10', 12', 16', and 20' (Custom Lengths Available)	
Color:	Bright White Appearance, Smooth Finish	
Fire Rating:	Class A   Flame Spread Classification of 5	
Hygienic Rating:	Meets CFIA and FDA & USDA requirements	
Warranty:	Limited Life Time Warranty	

### AVAILABLE TRUSSCORE™ PVC PROFILES



TRUSSCORE™ PVC Profiles are available to make your installation effortless and improve the look of finished interior walls and ceilings.

**Chemical Resistance of PVC Products** differs significantly from the mechanism of corrosion of metals. Chemical attack on PVC sheet, where it occurs, consists generally of absorption of the chemical by the PVC sheet and its subsequent swelling.

For a complete list of chemicals and corrosive media, please contact us. It is important to note that PVC sheets are generally not recommended for use with acetone, ketones, ethers, and aromatic and chlorinated hydrocarbons.

TRUSSCORE™ PVC Interlocking Liner Panels come with a **Limited Life Time Warranty**. Warrants to the direct purchaser of TRUSSCORE™ PVC Wall and Ceiling Liner that the TRUSSCORE™ will be free from manufacturing defects including peeling, flaking, blistering, and corroding when subject to normal and proper use.

**Have a question or need more information? Call 888.602.4441 Today!**

**Discover Why TRUSSCORE™ is the Better Choice!**

**TRUSSCORE™**  
PVC Interlocking Liner Panel