




Quick Web Links

Contact Us
AmeriLux Website
About Architectural
About Horticultural

 [Send to a Colleague](#)



Holiday Closing Schedule:

Christmas Eve Day - Dec 24
Christmas Day - Dec 25
New Year's Eve Day - Dec 31
New Year's Day - Jan 1

Frequently Asked Question

Q: What can I use to cover the gap at the peak of steel and post frame building?

A: A polycarbonate corrugated ridge cap is the perfect solution for covering the point where two roofing panels meet, keeping snow and rain out of the building while allowing natural daylight to come through at the peak.

AmeriLux Newsletter

December 2014

Valued Partner,

With the year's end fast approaching, we would like to take this opportunity to thank our customers, vendors, and partners for their support and continued business.

Strong business relationships take time and commitment to establish and maintain. It is these long-term partnerships and loyal business associates like you who help make our jobs a pleasure and keep our company successful.

May your holiday season and New Year be filled with good health, warmth, peace, and happiness. We look forward to working with you in the coming year as we continue to develop and grow our businesses together.

Thanks again for a wonderful 2014!



Blue Iguana Car Wash, Springfield, Missouri

"LEXAN™ THERMOCLICK™ Interlocking Sheet"

The Blue Iguana Car Wash was designed

[FIND MORE FAQ ON OUR WEBSITE - CLICK HERE](#)

The new High Top Ridge Cap is 30% stronger, offering more impact resistance. Call for more information!

Check out our [Pinterest Page](#) for Application Ideas!



Polycarbonate Term

Ridge Cap:

A flexible flashing piece that can be bent to a variety of roof pitches to cover the gap at the very top of a gable type roof.

[CLICK HERE TO VISIT OUR ONLINE GLOSSARY PAGE](#)

Check out Our [YouTube Channel](#)



Make sure to Subscribe!

Check out Our [BLOG](#)



and developed by Greg Byler, CEO of Pit Stop Consulting headquartered in Springfield, MO, a leading training and consulting firm serving the car wash and fast lube industries. The concept behind the design is to have customers go through the carwash and exit through a tower. This gives better visibility because the actual carwash is set back a bit.



Needing a product that could stand up to the unique challenges of a vehicle wash building, the 40mm LEXAN™ THERMOCLICK™ sheet was chosen for this project. This polycarbonate interlocking sheet eliminates the need for vertical profiles, thereby saving money and enhancing aesthetics. The specially designed fix-key connection provides superior loading performance.



A car wash facility is subject to a great deal of abuse on a daily basis which can translate into substantial upkeep costs. Low maintenance LEXAN™ THERMOCLICK™ sheets resist rusting, rotting, and warping, eliminating many

common vehicle wash problems like mold and mildew. The superior sound and excellent thermal insulation properties of the LEXAN™ THERMOCLICK™ sheet helps to keep noise levels low while reducing heating and cooling costs. Furthermore, LEXAN™ THERMOCLICK™ sheets are warranted against discoloration, which means the building will retain its fresh appearance for many years to come.

LEXAN™ THERMOCLICK™ is an easy-to-install, impact resistant, and virtually maintenance-free polycarbonate multiwall sheet. A cost effective solution, engineered to suit many cladding and façade applications such as residences, commercial buildings, office buildings, and warehouses.

If you would like more information on the LEXAN™ THERMOCLICK™ polycarbonate sheet, [please click here](#).

LEXAN THERMOCLICK is a trademark of SABIC.

Employee Spotlight: Kelly Romenesko

Visit our blog for updates on products, projects, technical information, industry news, and more! [CLICK HERE!](#)

DIY Tip of the Month

Easy to install, polycarbonate roof flashing adds a professional finish to any project!

Join Us on LinkedIn



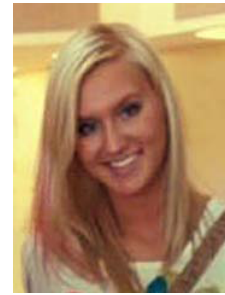
BECOME A FAN!



Join Our Mailing List!

"Focused on the Customer Experience"

Kelly Romenesko joined the AmeriLux A-team in October as a Customer Relations Representative. She is currently attending Northeast Wisconsin Technical College (NWTC) Green Bay campus. Kelly is planning to transfer to UW-Green Bay in hopes of earning a Bachelor's in Business.



Having previously worked in customer service, Kelly brings the skills necessary to effectively communicate with customers; the essential skills needed for customer satisfaction and retention. Her friendly manner, organizational skills, attention to detail, and service orientation will significantly contribute to AmeriLux's reputation for delivering positive customer experiences.

"I am thrilled with this opportunity to advance my customer service career," said Kelly. "I look forward to contributing to the excellent customer service, helping advance the company, and developing long term partnerships."

corrugated polycarbonate | multiwall polycarbonate | PVC sheet & liner panels