



March 2017

AmeriLux News

AmeriLux International is a value-adding distributor of multiwall and corrugated polycarbonate sheet products, PVC sheet and liner panels, and steel coil.

Featured Project:

East Harlem Grand Pavilion

"2016 Parsons Design Workshop Project"

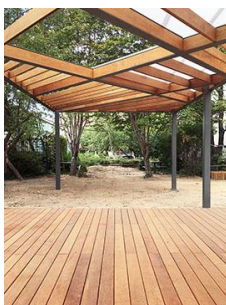
Located in New York City's Greenwich Village, near Union Square, the School of Constructed Environments (SCE) is situated within the Parsons School of Design. The SCE is an internationally recognized center for the study of the urban built environment.

The Design Workshop is SCE's signature design-build program; providing pro-bono design and construction services to NY nonprofits while offering graduate architecture and lighting design students the opportunity to work on projects for real clients. The East Harlem Garden Pavilion is the latest project in a long line of design-build projects completed by Workshop students.

Starting within the design portion of the Workshop, students re-imagined the East Harlem community garden known as El Sitio Feliz or "The Happy Place". The garden features a playground and is used throughout the year for community gardening activities as well as a variety of cultural and musical festivals.



Under the supervision of architecture faculty, students constructed a new pavilion and seating space using both purchased and donated building materials. The steel and cedar pavilion design incorporates elements that are both functional and visually appealing, including lighting, planters, an outdoor sink, and translucent roof panels.



Having had great success with similar systems in the past, the LEXAPANEL™ polycarbonate standing seam panel was used to glaze portions of the pavilion roof. Compared to other glazing materials, the LEXAN™ THERMOCLEAR™ 20mm panel is an extremely durable yet lightweight panel, offering ease of handling and installation. Students from the Workshop found the installation method of the LEXAPANEL™ system easy to grasp, installing the panels in one day.

While most of the 2016 Parsons Design Workshop project is complete, there are a few details that still need to be wrapped up. New playground equipment and landscaping will be put in as soon as the temperature is consistently above 50 degrees in NYC. The plan is to finish by late spring or early summer.

The Parsons' School of Constructed Environments (SCE) encompasses a unique array of design principles, challenging students to take on the cultural, environmental, and technological forces shaping the world today. [Click here to visit their website.](#)

LEXAN™ THERMOCLEAR™ and LEXAPANEL™ are trademarks of SABIC.

Meet the A-Team:

Diedra Wilmet | Customer Relations Representative



Before coming to AmeriLux, Diedra Wilmet worked as a merchandiser for the Indianapolis Fruit Company, a distributor of fruits, vegetables, and other produce items. After being with the company for seven years doing the same thing, she realized there was little to no room for growth.

Looking for a change in direction, Diedra joined the Customer Relations Department at AmeriLux in January 2017. Her primary duties are answering incoming calls, responding to customer's emails, estimating and order entry, as well as, numerous other support functions.

When asked what she is enjoying most about her role at AmeriLux, Diedra replied, "Every day is different. I like the challenge and I enjoy having to stretch my brain a bit!"

Fun Fact: Diedra spends most of her spare time at a local boarding facility, riding and caring for her horse "Val".

In the News:

AmeriLux is Expanding ... Again!

Since being formed in May 2004, AmeriLux International has expanded its facility twice. In 2009, we expanded the distribution center and operations space, nearly doubling the physical plant size. In 2012, we completed another expansion to the distribution center; bringing the total square footage of operations space to just under 60,000 square feet.



This time, AmeriLux is adding an additional building. The 30,592 square foot facility is being built on the vacant property adjacent to our current East De Pere location and will house our extensive inventory of multiwall polycarbonate products. The new building will have 161 unique storage locations; providing us the opportunity to improve our lot control, minimize double handling of material, and allow for a true FIFO inventory system.



Follow our [Expansion Progress](#). Updates and photos will be posted regularly.

Second Annual Chili Cook-Off



The 2nd Annual AmeriLux Chili Cook-Off was held last week. Employees were encouraged to bring in an unmarked crock-pot of their world famous chili. Each slow cooker was assigned a number to keep the participants identity anonymous.

Five competitors put their best chili recipe to the test. A panel of three judges evaluated each chili on the following criteria: color, aroma, texture, flavor, and heat. Categories were scored on a scale of 1-5, with five being the best. Points were tallied to determine first, second, and third place winners.

The winners received totally awesome trophies, cool prizes, and bragging rights for the next year. After the winners were announced, everyone dove in and enjoyed the spicy deliciousness.

This year's Chili Cook-Off winners were:

1st place: Chris Cutcher

2nd place: Patrick Eagle

3rd place: Julia VerHaagh



Thank you to everyone who participated and to our special guest judge, Wayne Carter.

Featured Product



LEXAPANEL™

"Standing Seam Panel"

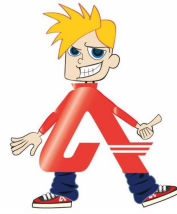
The LEXAPANEL™ standing seam system is a snap-on connection between two adjacent polycarbonate panels. The panel's edges are turned up and then interlocked.

The standing seam design reduces the use of gaskets and sealants, minimizes the chance for leakage, and eliminates the need for aluminum profiles.

The clip and batten system distributes positive and negative loads over a large area, taking advantage of the high strength and flexibility of the multiwall polycarbonate.

[Click here to learn more about this product.](#)

Ask the Tech Expert



Q: Are polycarbonate panels "virtually unbreakable"?

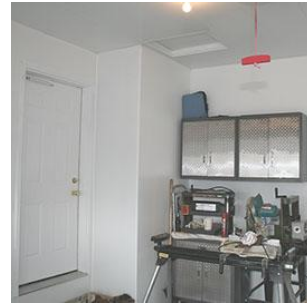
A: No product is completely indestructible. However, polycarbonate is a durable, exceedingly tough transparent thermoplastic that is virtually unbreakable and shatterproof.

One of the biggest advantages of polycarbonate is its high impact resistance and outstanding strength. Polycarbonate panels have the ability to dissipate the energy of an impact without breaking.

In other words, polycarbonate gets its strength from being flexible, meaning, it "gives a little" when impacted.

[Click here for a list of our most frequently asked questions.](#)

DIY Tip of the Month



"PVC Wall and Ceiling Panels"

Lightweight and easy to install, PVC Liner Panels offer a low-maintenance, finished look for your garage.

The bright white surface is a natural light reflector and creates a pleasant workspace.

The durable finish is highly resistant to chemicals, moisture, and mold.

PVC panels never require painting or refinishing and wash easily with soap and water.

Looking to transform your garage? Call **888.602.4441** for product information.

© 2017. All Rights Reserved.



AmeriLux International LLC, 1212 Enterprise Drive, De Pere, WI 54115

[SafeUnsubscribe™ {recipient's email}](#)

[Forward this email](#) | [Update Profile](#) | [About our service provider](#)

Sent by richards@ameriluxinternational.com in collaboration with

