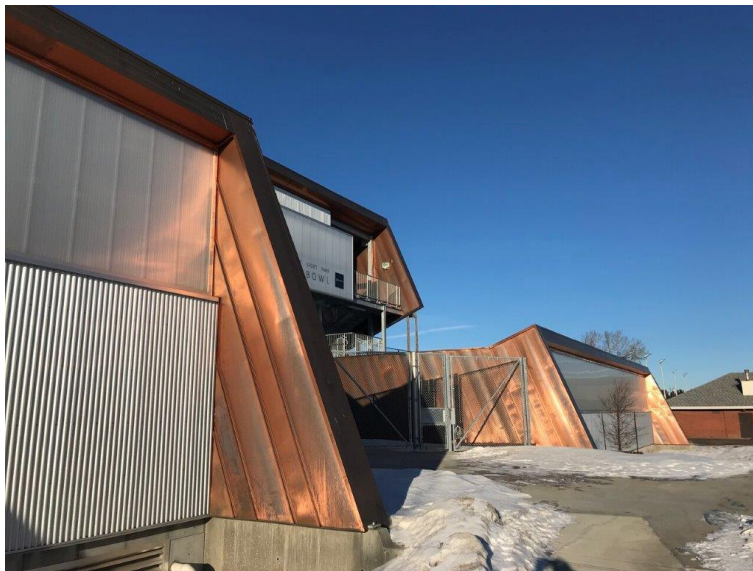




Jasper Place Bowl Stadium

Clad in Copper and Polycarbonate



leaning in to watch the events on the sports field below.

Originally built in 1967, Jasper Place (JP) Bowl recently replaced its aging grandstand with a new seating structure, additional dressing rooms, and a spotters box. The sports facility is located within a suburban park in Edmonton, AB, Canada.

Designed by [Dub Architects Ltd.](#), the building's overall form was inspired by the sloped angle of the bleacher seats. So much so, that the structure's shape resembles an open, engaged body posture. The building itself appears to be

The angled wall elements of the new grandstand are covered in copper panels and opal colored polycarbonate sheets. The copper cladding will oxidize over time and gain a beautiful patina with age, adding a natural elemental quality to the structure.

Durable, lightweight, and impact resistant, LEXAN™ THERMOCLICK™ 40mm polycarbonate sheets were an ideal façade choice for this project. The most obvious advantage in an application like Jasper Place Bowl is the sheet's resistance to damage from balls or other projectiles.

In addition to being light in weight for easy installation and replacement, the sheet's specially designed tongue and groove connection eliminated the need for vertical framing members, providing a modern look that compliments the contemporary stadium design.

The aluminum framing used to support the LEXAN™ THERMOCLICK™ sheets is the [EXTECH LIGHTWALL 3440® system](#). This specially engineered profile system has several impressive design features that



made it a great fit for this application.

Alan Lohr, Senior Project Engineer with [EXTECH/Exterior Technologies, Inc.](#) had this to say about the 3440 LIGHTWALL system: “The deep glazing pockets (rabbets) allow for the thermal expansion and contraction of the polycarbonate sheets while providing proper engagement of the glazing in very cold temperatures. The design of the framing ensures proper gasket pressure against the glazing.”



He went on to explain how the use of gasketing with a low friction surface provides excellent protection against air and water infiltration through the system, while allowing for the free movement of the polycarbonate glazing.

Dub Architects worked closely with [Polymershapes](#) in Calgary, AB in specifying this interlocking polycarbonate translucent wall system for this project. Polymershapes also coordinated and facilitated the shipment of the polycarbonate panels and aluminum framing system to the job site.

This project is a great example of drawing together a number of different partnerships to deliver a sustainable solution.

The Jasper Place Bowl project is a distinctive design derived from specific client needs and the beautiful setting. The tilted elevations of copper and translucent polycarbonate mimic well the diverse landscape and scenery of Edmonton, Alberta, Canada. [To learn more about this project, visit dubarchitects.ca/jasper-place-bowl-stadium.](http://dubarchitects.ca/jasper-place-bowl-stadium)

**Photos courtesy of Jeff Olsen, West Edmonton*

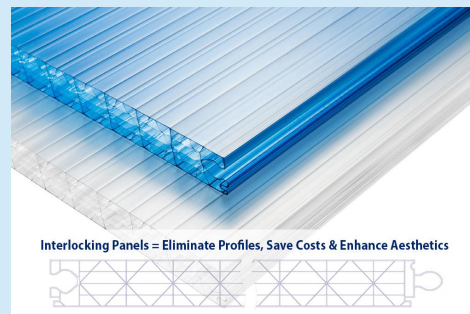
Featured Product

LEXAN™ THERMOCLICK™ 40mm

Featuring a specially designed tongue and groove connection, LEXAN™ THERMOCLICK™ 40mm is a high-performance, energy-saving, multiwall polycarbonate sheet.

LEXAN™ THERMOCLICK™ 40mm offers a UV-protected outer surface, good light transmission, excellent thermal properties, high impact strength, and a unique 5-wall X-structure profile. This interlocking sheet system not only helps in the reduction of heating and cooling costs, but also cuts energy usage and CO2 emissions benefiting the environment.

With the spotlight on sustainability, the LEXAN™ THERMOCLICK™ 40mm polycarbonate sheet is a smart choice for improving energy efficiency in commercial, residential, and industrial buildings.



AmeriLux stocks LEXAN™ THERMOCLICK™ 40mm in Clear, Opal, and Blue. (Special order colors: Yellow, Orange, Red, Green, Purple, SCIR Blue, SCIR Green, and SCIR Grey.)

[Product Brochure](#)

DIY Tip of the Month

Cold Frame

Want to get a jump start on your gardening for spring?

A cold frame keeps seedlings safe and protected from the wind and cold weather. Multiwall polycarbonate is a great material choice for building a cold frame.



- Thermal efficiency
- Excellent durability
- Easy to cut and install
- High light transmission

These lightweight sheets can be cut and installed with common household tools, making this an easy DIY project.

Call 888.602.4441 today for more product information and pricing.

Frequently Asked Polycarbonate Question

Q: What things should be considered before starting my multiwall polycarbonate project?

A. Before starting your DIY project, gather up all the essential tools needed to fabricate and install your multiwall polycarbonate sheets efficiently. Double check your materials list. Think about what safety gear you may need. Read the installation manual. Educate yourself by watching DIY how-to videos.



More FAQs

Polycarbonate in Agriculture

Agricultural Applications



Impressive Features of PVC and Polycarbonate

Both PVC liner panels and polycarbonate sheets are well suited for the agricultural market.

PVC liner panels are versatile and easy to install. Featuring high impact strength, the panels will not dent due to high traffic from equipment, workers, or animals. They can be easily cleaned with conventional spray equipment, making the panels a low maintenance choice in even the messiest applications.

Translucent and featuring light diffusion properties, polycarbonate can be used to let in comfortable daylight for people and farm animals. The impressive durability of the sheets means that they will maintain their integrity for years to come.

Suitable Agricultural Applications



Agrilite PVC-Lined Dairy Building



Clear Polycarbonate Ridge Skylight



Bronze Corrugated Polycarbonate Glazing

Additional agricultural applications include:

- | | |
|-------------------|--------------------|
| Hog Barns | Kennels |
| Salt Storage | Meat Packing |
| Poultry Shelters | Fertilizer Storage |
| Storage Buildings | Food Processing |

Links of Interest

- [Three Michigan restaurants receive donated polycarbonate greenhouses to accommodate outdoor dining during the winter months of the pandemic](#)
- [Using translucent glazing materials can reinforce natural biorhythms and promote engagement with the natural world for improved mental health](#)
- [This tea shop in Tokyo is designed with operable polycarbonate screens for an open storefront where customers can drop in casually](#)

News from Shape Products

The New Shape Website is Live!

Shape Products has been working hard behind the scenes on various rebranding efforts. Over the last few months you've seen our new logo, updated signage at our Menomonie, WI location, and refreshed content throughout our social media pages.

One of our initiatives since Shape's acquisition in July was to improve the customer experience of our website. As of last week, the new Shape Products website is live! The new website features a whole new look and feel, updated information and images, and some fun features, like the interactive company timeline on our About page.



We're excited to finally be able to share the [new site](#) with you! Take some time to browse through the site, our team is standing by to answer any product inquiries you have.

If you don't want to miss out on more updates from Shape Products, follow us on [Facebook](#), [LinkedIn](#), and [YouTube](#).

Company Highlights

Meet the A-Team

Employee Spotlight | Emma Wurl

Looking for an exciting opportunity in the field of marketing, Emma joined the A-Team last summer as the Marketing Manager for the Shape Products Division of AmeriLux.

Since starting her role, Emma has undertaken a large rebranding project. This has included creating a new Shape Products logo, redesigning the Shape website, and updating all the marketing materials.

On a day-to-day basis, she can be found conducting market research for new and existing products, collaborating with the sales and marketing teams, or creating content for internal and external uses.

"I enjoy how dynamic my role is," Emma said. "Each day is completely different, and I enjoy bouncing between different types of tasks." She loves being able to use both her creative and analytic skills to create win-wins for Shape Products and its retail partners.



"I love how collaborative the culture at AmeriLux is. There is always room for everyone to share their ideas, brainstorm together, and come up with win-win solutions."

Culture Statement

At AmeriLux, we choose to believe that where there is a will, there is a way. We search for tangible solutions to even the most challenging situations and work to see our visions carried out.



"We cultivate a solution-oriented, 'can do' attitude. We are consistent and reliable in following through with commitments. We hire, give recognition to, and promote those who operate with a 'YES' mentality. Our default question is 'How can we do it?' rather than focusing on why an idea won't work or how difficult it may be. We favor pragmatism over philosophizing. 'Let's boil the abstract down to the concrete.'"

How We Succeed
At AmeriLux

The AmeriLux Family of Companies

AmeriLux International

AmeriLux Transportation & Logistics

Shape Products

