

EZ FORMS

Concrete Form Assembly System

Horizontal 'Push-Click' Installation

A cost-effective option to traditional concrete wall construction, EZ Forms is a revolutionary new concrete wall-forming system. Every joint of this innovative system comes with an option to have a built-in flexible seal to resist unwanted liquid/gas penetration.

These stay-in-place forms are made from an extremely durable PVC material that is filled with pre-mixed concrete and rebar reinforcement. This creates a nearly indestructible wall that's energy-efficient, absorbs sound, and is highly resilient in storm-prone areas.

Compared to similar systems, EZ Form is easier to handle and erect. The forms and spacers interlock horizontally, providing a headache-free installation. No lifting the pieces up! Simply 'push-n-click' the pieces together for a quick and fast wall assembly.

The system's nine-inch-wide form pieces accommodate vertical rebar placement spacing of eighteen inches perfectly, making these concrete wall forms more convenient to use than other like types of products.

In addition, this concrete form system also features a unique three-piece corner. The EZ Form three-piece corner makes installing a corner simple, allowing for easy fitment and access to all rebars. This unique design was created to resolve both installers and inspector's worst nightmares.



KEY ADVANTAGES:

- Horizontal 'Push-n-Click' Install System
- Unique 3-Piece Corner Assembly
- Highly Resistant to Strong Winds & Fire
- Energy & Installation Cost Savings
- Low Maintenance & Easy-to-Clean



**Quick & Fast
Wall Assembly**

Want to learn more? Discover EZ PVC LLC on YouTube and watch the EZ Forms Components Introduction Video.



Revolutionary, Innovative, Easier to Install

EZ Forms is a new and revolutionary concrete form assembly system. The innovative interlocking system allows for headache-free horizontal (push-click) installation. These stay-in-place concrete forms are a great option for the construction of commercial buildings as well as residential homes.

The new and revolutionary concrete form assembly system.



9" Form



2.25" Spacer



1.75" Spacer



6" Cap



Female Starter



Male Starter

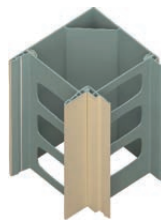
The 3-piece corner makes installing a corner simple. It allows for easy fitment and access to all rebar. The design was created to resolve installer and inspector's worst nightmare.



3 pc Corner
(inside assembled)



3 pc Corner
(apart)



3 pc Corner
(assembled)

EZ Form Standard Color Chart



White



Beige



Gray

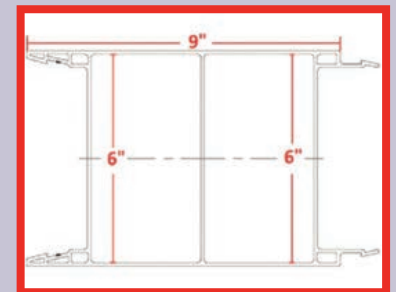
*Custom colors available!
Call or email us to inquire
about pricing and availability.*



EZ Forms is Revolutionary:
Horizontal (push-click) installation.



EZ Forms is Innovative:
Snap connection eliminates water leakage.



EZ Forms is Easier:
9" wide accommodates the vertical rebar
placement spacing of 18" perfectly.

Distributed and Fabricated By:

AmeriLux International is a leading distributor & fabricator of a broad range of multiwall polycarbonate, corrugated polycarbonate, PVC sheet and liner panels.

Call today for complete product information and/or for a distributor in your area:

P: 888-602-4441

F: 920-336-9301

Or visit our website:

www.ameriluxinternational.com

