

Are Polycarbonate Greenhouses Worth It?

"The advantages of using multiwall polycarbonate"



There are many glazing options available for building a greenhouse. While all let in plenty of sunlight, the covering you will want to use will depend on the climate where you live, the type and style of structure you are planning to build, what plants you intend to grow, and, ultimately, your budget.

Choosing the right covering is very important because the success of your greenhouse depends on it. "Why, you ask?" Plants need light to grow and flourish. The glazing material used to cover your greenhouse will affect the

quality and quantity of light plants receive. Without light, your plants will not survive.

Compared to glass, acrylic, fiberglass, and polyethylene film, multiwall polycarbonate sheets offer the greenhouse grower the ideal combination of impact strength, thermal insulation, flame and condensation control, and long-term light transmission.

High Light Transmission

Multiwall polycarbonate naturally diffuses light while maintaining a high light transmission. Hot spots and shadows in the greenhouse are nearly eliminated. Plants benefit from high levels of even light for faster, uniform growth.



Resistant to Ultraviolet Rays

A special UV protective layer on the outer surface of the sheet blocks harmful ultraviolet rays from the sun. This feature not only protects the sheet from yellowing, but it also makes the greenhouse environment safer for you and healthier for your plants.

Anti-Condensation Protection

An anti-drip coating on the inner surface of the sheet ensures condensation is carried away from the greenhouse roof, preventing water droplets from damaging delicate plants, spreading disease, and causing loss of light.



Outstanding Impact Performance

Impact and shatter resistant, multiwall polycarbonate is virtually unbreakable. The sheets are designed to withstand all kinds of weather conditions such as snow, wind, ice, and hail. Multiwall polycarbonate is an ideal glazing choice for a year-round greenhouse.

Excellent Thermal Insulation

The cellular structure of multiwall polycarbonate traps air between the sheet's walls, creating a higher R value and energy savings. Better insulation means less money spent heating and cooling your greenhouse.

Good Fire Behavior Characteristics

Multiwall polycarbonate offers good flame-retardant properties and is generally self-extinguishing. Higher flame ratings often lead to lower insurance rates.



The advantages of using multiwall polycarbonate sheets are numerous. Easy to handle, fabricate, and install, multiwall polycarbonate sheets will live up to your expectations season after season. These high-performance, long-lasting sheets promise to protect your plants and your bottom line.

Whether you are planning to build a new greenhouse or retrofit an existing one, the friendly and knowledgeable team at AmeriLux is here to help you create a growing environment your plants will thrive in.

“Protect Your Plants – Grow Your Investment!”

For additional product information and pricing, please call 888.602.4441 or send an email to customer.service@amerilux.com.

Featured Product

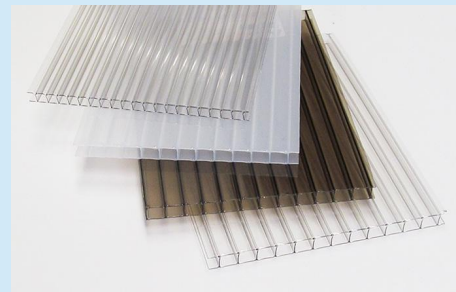
LEXAN™ VEROLITE™ Twin Wall

LEXAN™ VEROLITE™ twin wall polycarbonate sheets are a versatile and economical alternative to traditional glazing. This high quality multiwall sheet is available in 6mm and 8mm thicknesses.

- High Light Transmission
- Excellent Thermal Insulation
- Virtually Unbreakable
- Easily Fabricated On-Site

LEXAN™ VEROLITE™ is a great material choice for many applications including carports, pergolas, patio covers, walkways, and greenhouses.

If you would like to learn more about LEXAN™ VEROLITE™ multiwall polycarbonate sheets, please visit the product webpage or call 888.602.4441 to speak to an A-Team member today!



LEXAN™ VEROLITE™ is an affordable polycarbonate sheet that will live up to your expectations season after season.

[Visit Product Page](#)

DIY Tip of the Month

Give Seedlings an Early Start

Want to get a head start on your gardening this spring?



A portable cold frame will keep vegetable and flower seedlings safe and

Anti-Condensation Protection

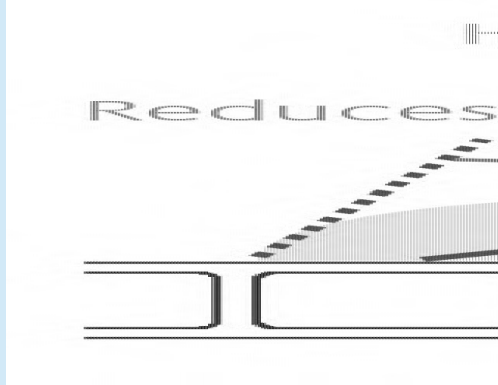
protected from inclement or damaging weather.

Multiwall polycarbonate sheets are an ideal glazing option for building this type of 'mini greenhouse'.

Multiwall polycarbonate sheets can be cut and installed with common household tools, making this a simple DIY weekend project.



Call 888.602.4441 today for more product information and pricing. Ask about our 'polycarbonate drops' for special discounts!




Q: What are the benefits of using a polycarbonate panel with an anti-condensate coating?

A: An anti-drip or anti-condensate coating reduces surface tension, encouraging water to form a thin layer and divert down the sides of the greenhouse instead of dripping onto plants.

Benefits include higher light transmission, fewer issues with disease, reduced need for pesticides, and better quality plants.

[More FAQs](#)

Understanding Thermal Movement

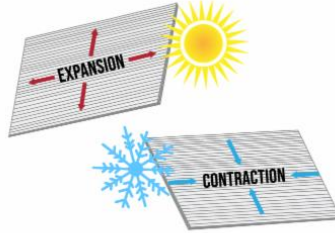


POLYCARBONATE EXPANSION & CONTRACTION

When installing multiwall polycarbonate panels, it is important to keep thermal movement in mind. Meaning, multiwall panels expand and contract due to seasonal temperature changes throughout the year. With the greatest amount of thermal expansion occurring during the Spring and Fall.

Multiwall polycarbonate sheets expand in hot weather and contract in cold, so it is important to allow for about 1/32" of thermal expansion per foot for every 100 degrees of temperature change. Thermal allowance should be made for both the length and width of the panel. Bronze colored panels expand and contract more – requiring an addition 30% space.

INSTALL TIPS



- Plan for thermal expansion
- Install between 55°F - 75°F
- Pre-drilling holes is recommended
- Bronze expands & contracts more



Links of Interest

- [A renovated coffee shop in the bustling district of Taipei, Taiwan uses opaque polycarbonate panels as spatial dividers, providing plenty of natural diffused light.](#)
- [Translucent corrugated polycarbonate panels create ambient light and a bright internal environment for this photographer's studio located in the Kanto region of Japan.](#)
- [Located in Barberà del Vallès, Spain, the exterior of a GYM 704 is clad with clear polycarbonate panels, contributing to both energy savings and illuminating the building's interior.](#)

Company Highlights

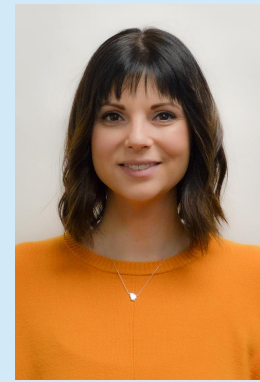
Meet the A-Team

Employee Spotlight | Lindsey Winn

Drawn to AmeriLux's core values, Lindsey joined the A-team last May. "After meeting with HR and learning more about the company and its core values, I was convinced that this was where I wanted to be."

Formally educated in business and supply chain management, Lindsey brings eighteen years of retail management, buying, and operations experience to AmeriLux International. She enjoys the diversity of her role as a Supply Chain Analyst, from managing vendor relationships, price negotiations, purchasing, and forecasting to helping create inventory control procedures and managing freight forwarders.

The most challenging aspect of her job so far has been dealing with supply chain issues. "The supply chain has been significantly disrupted from the pandemic which has created extraordinary long lead times, constant price increases, and raw material shortages," Lindsey explained. "However, I find this type of work incredibly rewarding because I get to help create solutions to problems."



"My favorite culture statement is 'We'll be even better tomorrow' because I believe in continual growth and improvement."

"Is This A Great Country, Or What..?!"



"We celebrate our freedom and opportunity and look to the future with optimism. We believe in the power of happiness and positivity to produce outstanding results. We are intentional about cultivating creativity and innovation through optimistic, positive thinking."

March Brand Ambassador:

Michelle Ladwig

Business Development Specialist – AmeriLux International

How We Succeed at AmeriLux

The AmeriLux Family of Companies

[AmeriLux International](#)

[AmeriLux Transportation & Logistics](#)

[Shape Products](#)

