

# FASTENERS

## Quality Installation Components

Fasteners are a key component of most building projects. Using the right fastener size and type is very important. It can be the difference between a successful installation project or one that continually has problems. When the wrong fastener is used, both the fastener and the panel can fail. Proper fastener selection will help ensure the panel system lasts for years.



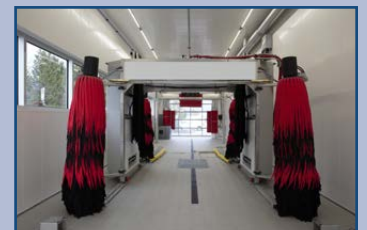
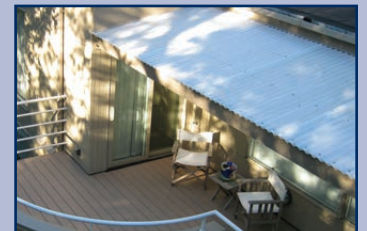
### QUALITY FASTENER HARDWARE FOR POLYCARBONATE AND PVC PANEL APPLICATIONS

AmeriLux is proud to offer an assorted variety of durable fasteners to complement its multiwall and corrugated polycarbonate sheet products and PVC sheet and liner panels. Call today and speak to a knowledgeable AmeriLux associate for guidance and assistance in selecting the right fastener to complete your next project.

*Make sure you are using the right fastener for your project!*



**Every application  
is different.  
Using the right  
fastener will prevent  
problems later on!**



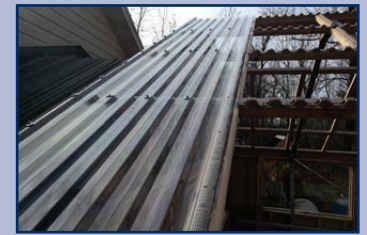
# FASTENERS

## Quality Installation Components

There are many factors to consider when selecting a fastener including length, color, panel thickness, the type of structure, and the environmental conditions – especially in corrosive or high-moisture environments. Every application is different. Making the right fastener selection will ensure high product performance and prevent problems later on.

### QUESTIONS TO ASK WHEN SELECTING A FASTENER:

- What type of structure am I working with?
- How long of a screw do I need to securely anchor to the structure?
- How thick are the panels and does the color of the screw matter?
- What weather elements will the fasteners be exposed to?



FASTENERS								
Fasteners	Part No.	Description Thread/Size/Type	Head	Wing	Washer	Color	Structure	Recommended Use
	3330001	CoverLite® 2" #12 x 2" Sharp Tip	Hex	Yes	14mm EPDM	White	Wood	6mm-25mm Multiwall Polycarbonate Corrugated Polycarbonate
	3330002	CoverLite® 2" #12 x 2" Sharp Tip	Hex	Yes	14mm EPDM	Bronze	Wood	6mm-25mm Multiwall Polycarbonate Corrugated Polycarbonate
	3330003	CoverLite® 2" #12 x 2" Sharp Tip	Hex	Yes	14mm EPDM	Unpainted	Wood	6mm-25mm Multiwall Polycarbonate Corrugated Polycarbonate
	3330004	CoverLite® 2" #12 x 2" Self-Drilling/Self-Tapping	Hex	Yes	14mm EPDM	White	Metal	6mm-25mm Multiwall Polycarbonate Corrugated Polycarbonate
	3330005	CoverLite® 2" #12 x 2" Self-Drilling/Self-Tapping	Hex	Yes	14mm EPDM	Bronze	Metal	6mm-25mm Multiwall Polycarbonate Corrugated Polycarbonate
	3330006	CoverLite® 2" #12 x 2" Self-Drilling/Self-Tapping	Hex	Yes	14mm EPDM	Unpainted	Metal	6mm-25mm Multiwall Polycarbonate Corrugated Polycarbonate
	EZL-SSWOOD	EZ Liner™ #8 x 1 1/4" Square Truss Head	Phillips	No	—	Unpainted Stainless Steel	Wood	EZ Liner™ PVC Interlocking Liner Panels
	EZL-SSMETAL	EZ Liner™ #8 x 1 1/4" Square Pan Head	Phillips	No	—	Unpainted Stainless Steel	Metal	EZ Liner™ PVC Interlocking Liner Panels
	EZL-TAPCON-1.25	EZ Liner™ #11 x 1 1/4" Tapcon	Hex	No	—	Blue	Concrete	EZ Liner™ PVC Interlocking Liner Panels

### BASIC INSTALLATION GUIDELINES:

- Panel thickness and structure type will determine correct fastener to use.
- Select a fastener long enough to penetrate a minimum of 1" into the structure.
- Pre-drill holes 1/16" larger than the screw diameter to allow for expansion and contraction.
- For the best sealing quality, use an EDPM or neoprene bonded washer.
- Screw fasteners in straight and do not over-tighten any fastener. Use a slower speed for last few turns.
- Loading requirements determine the pattern and frequency of fastener attachment. Check with your local building department.
- These are general guidelines. Please call to request a product installation guide for specific fastener install methods and information.

**Install Tip:**  
Screw fasteners  
in straight and  
don't over-tighten!



### Distributed By:

AmeriLux International is a leading distributor & fabricator of a broad range of multiwall polycarbonate, corrugated polycarbonate, PVC sheet and liner panels.

Call today for complete product information and for a distributor in your area:

P: 888-602-4441

F: 920-336-9301

Or visit our website:

[www.ameriluxinternational.com](http://www.ameriluxinternational.com)

