

EC New Highway Department Facility "Modern, Sustainable & Energy Efficient"



Marking a milestone for this Wisconsin county's journey towards getting all of its energy from renewable sources by 2050, this new highway department facility will soon be home to the Eau Claire County Highway Department and Emergency Management Services as well as the county's Meals-on-Wheels Program.

Located on the southeast corner of the City of Eau Claire, this new highway department complex will primarily be used to store and maintain county vehicles, including snowplows

and other equipment used for utilities and infrastructure maintenance. There will also be shed space for salt and sand storage.

This modern and sustainable building is designed to be 65% more energy efficient than a baseline facility and is estimated to save around 113 tons of CO2 emissions a year. The buildings solar array and geothermal loop system make it the first county-owned facility with its own on-site solar generation.

Highly resistant to moisture, corrosion, and most chemicals, EZ Liner™ PVC interlocking liner panels are made to withstand daily abuse, occasional impact, and frequent washings. A great sustainable building material choice for the facility's new kitchen and salt brine shed.

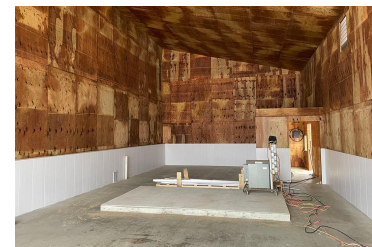


Modern Kitchen

Perfect for kitchen wall use, the EZ Liner™ panel is well-suited for environments like this and will not support mold, mildew, odor, or rot. Because these PVC panels never need to be painted, upkeep costs are reduced considerably. The panel's ultra-white surface is easy to clean and brightens the facilities overall appearance, optimizing the effects of the building's interior lighting.

Salt Brine Shed

Unique to EZ Liner™ is an all-weather interlocking system that allows for necessary panel contraction and expansion due to temperature fluctuations. Because these panels feature a Class A smoke and flame interior finish, they are permitted in buildings that require either combustible or non-combustible construction. Completing this system is a full line of trim pieces, providing a finished, professional look.



EZ Liner™ is designed for a wide variety of demanding applications!

Owners of manufacturing, storage, and distribution buildings are choosing to build with EZ Liner™ because the tongue-and-groove interlocking system makes both vertical and horizontal installations quick and easy. This extremely durable PVC panel is safe to work with

when using normal construction practices and the waste material is 100% recyclable.

In addition, EZ Liner™ panels are a cost-effective option when compared to traditional building materials and can be used in either retrofit or new construction applications. Looking for a great alternative to FRP (fiberglass) or drywall for your next interior cladding project? Call 888-602-4441 today for more product information and a free quote.

Wherever you need a smooth finish that is easy-to-clean, low-maintenance, hygienic and abuse resistant, [EZ Liner™ PVC liner panels](#) are an ideal wall or ceiling panel choice.

Featured Product

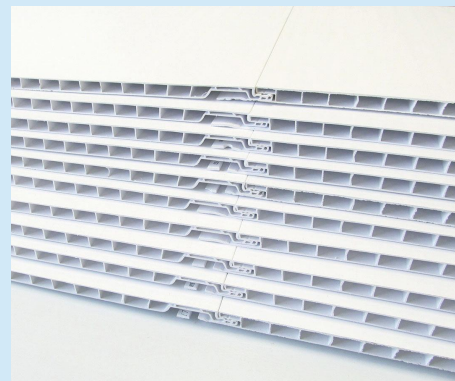
EZ Liner™ PVC Wall & Ceiling Panels

Perfect for wall and ceiling applications, EZ Liner™ is a PVC based polymer product that is manufactured in Canada using 100% virgin lead free material.

EZ Liner™ panels are light in weight, require minimal maintenance, and the surface is easy to clean with a power washer. The panels tongue-and-groove interlocking system and pre-slotted nailing flange make installs quick and easy.

- **Hidden fasteners create smooth finish**
- **Pre-slotted nailing flange is easy to install**
- **Resistant to moisture & most chemicals**
- **Class A fire & smoke rating, non-flammable**

Designed for the most demanding indoor applications, the EZ Liner™ PVC interlocking liner panel complies with the National Building Code of Canada, the International Building Code, and meets all FDA and CFIA requirements.



EZ Liner™ wall and ceiling system comes with a full line of trims to help make your installation effortless and improve the look of finished interior wall and ceilings.

[Visit Product Page](#)

DIY Tip of the Month

Attached Hobby Greenhouse

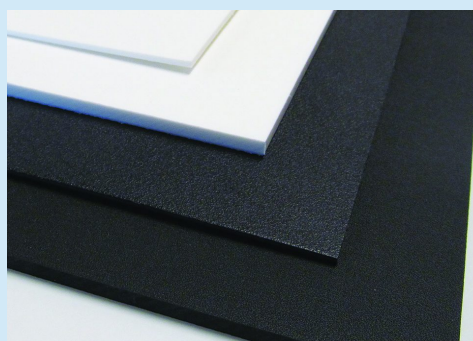
A lean-to greenhouse (also called a side of house greenhouse) is a great place to grow plants.



It also provides homeowners with an indoor living oasis – a perfect sunny-day lounging spot. If you love plants and enjoy gardening, a 'home attached' greenhouse would be a great addition.

- **Convenient space to grow seedlings**
- **Year-round access to fresh herbs**
- **Overwinter delicate tropical plants**
- **Easy access to water & electricity**

HDPE Scuff Marks



Q: Is it possible to remove scuff marks from the surface of an HDPE (high-density polyethylene) sheet?

A. Try using the back of a spoon or a flat-tip screwdriver to burnish and smooth any small scratches or scuffs, applying even pressure in a parallel

- **Uses less building & glazing materials**

Limited backyard space for a free-standing structure? An attached greenhouse is a great alternative to a traditional A-frame design.

Affordable and easy-to-build, make this your next DIY project. Bring nature's warmth and comfort into your home!

motion to the marks.

Minor marred spots and imperfections can also be minimized by passing the flame of a lighter or an acetylene torch lightly over the affected area.

More FAQs

Health Benefits of Natural Light



**May is
MENTAL HEALTH
Awareness Month**

Since 1949, this month has been observed as a time to get educated, offer support, and spread awareness about mental health issues. What can you do to improve your own behavioral health and the wellness of others? Enjoy more sunlight!

Bring more daylight into your home or workspace by adding skylights, transom windows, or a window wall system. Polycarbonate daylighting solutions provide an abundance of diffused natural light, delivering visual comfort and improving well-being while reducing energy costs.

**BENEFITS OF
NATURAL DAYLIGHT:**



Helps prevent depression and other health issues



Sunlight helps produce the "happy" hormone serotonin



Leads to higher productivity



Boost the bodies vitamin D



Links of Interest

- [Built for the Royal Vancouver Yacht Club, The Dock Building features a large translucent polycarbonate wall, providing plenty of natural light during the day and a beautiful glow at night.](#)
- [Villa Fifty-Fifty is a pavilion-like family home located in the Netherlands that showcases an unusual application of building materials including a round shed fashioned from corrugated polycarbonate.](#)
- [The elevation facing the road of this small complex in Minamisoma, Japan is clad with semi-transparent polycarbonate, illuminating the building's interior during the day and the city at night.](#)

Company Highlights

Together, We Can Make Change!

Started in 2012 by Luke and Heidi Mickelson in Twin Falls, Idaho, the nonprofit organization 'Sleep in Heavenly Peace' has grown to over 240 chapters across the country. This all-volunteer organization's mission is to build, assemble, and deliver bunk beds to families in need, providing kids with a safe and comfortable place to lay their heads.

It takes a village! Building over 1,000 bunk beds takes hardworking volunteers, dedicated set-up and clean-up teams, a lot of materials, great sponsors, and a location



Photo: Courtesy of Facebook/SHP De Pere, WI

with plenty of room. After setting up shop in the AmeriLux warehouse for many Saturdays, the De Pere SHP Chapter recently moved into their own space and hosted the first build at the chapter's new location on May 11th.

AmeriLux is proud to have played a small part in helping this great chapter/organization reach its goals and achieve its mission. [No Kid Sleeps on the Floor in Our Town!](#)

To learn more, become a volunteer, or make a tax-deductible donation, please visit their website [Sleep in Heavenly Peace](#)

Meet the A-Team

Employee Spotlight | Jacqueline Roseberry

Looking to utilize her master's degree in business and a background in customer service, Jacqueline joined the A-Team last Spring. A dedication to promote from within, a strong focus on culture, and a true commitment to building long-lasting relationships are just a few of the reasons why Jacqueline enjoys working at AmeriLux.

As an Account Manager for AmeriLux International, Jacqueline says she loves developing win-win relationships. "The thing that I enjoy most about my role is my customers. I love building relationships with them, getting to know them, and being able to talk about how AmeriLux can help them out."

"The most challenging aspect of my role so far has been learning the products." Jacqueline went on to explain, "We have so many different products that can be used in so many different applications it can be difficult to remember them all! I feel like I am learning something new about our products every day!"



"The culture at AmeriLux is welcoming and warm."

"Communication is Our Currency"



"We prioritize face-to-face interaction over electronic communication in a world going the other way. We seek deeper, more profound connections that build authentic relationships. We look to create maximum value in our daily exchanges with one another through presence of mind and body."

May's Brand Ambassador:

Nate Schadrie, Inventory Specialist - AmeriLux International

[How We Succeed at AmeriLux](#)

Happy Memorial Day!

On this Memorial Day weekend, we honor those who have served, those who continue to serve, and those who gave their lives in defense of our country and to protect her freedoms. Their courage, commitment, and sacrifice deserve our utmost respect and tremendous gratitude.

We hope everyone enjoys a safe and wonderful weekend with family and friends while keeping the meaning of this holiday in mind. From all of us at the AmeriLux Family of Companies, we wish you a Happy Memorial Day!



“Our flag does not fly because the wind moves it. It flies with the last breath of each soldier who died protecting it.” – Anonymous

The AmeriLux Family of Companies

[AmeriLux International](#)

[AmeriLux Transportation & Logistics](#)

[Shape Products](#)

