

## Designing with Daylight in Mind "Translucent Polycarbonate Facades"

While there are many benefits to designing with daylighting and energy efficiency in mind, it also presents many architectural challenges. LEXAN™ THERMOCLICK™ polycarbonate sheets provide architects and designers with a glazing product that meets today's demands for creating eco-friendly living and working environments.

The specially designed tongue and groove connection eliminates the need for vertical profiles, thereby saving money on labor and materials while enhancing aesthetics. In addition, the daylighting and thermal insulation properties of the LEXAN™ THERMOCLICK™ sheet will help to reduce overall energy costs.

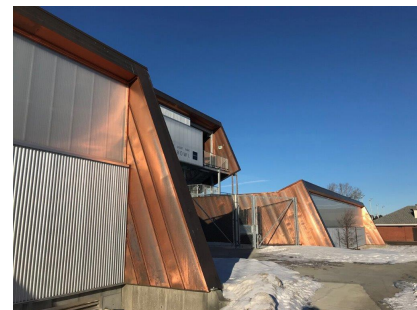
### Here are a several projects that showcase this high-performance interlocking sheet system:

**OGE Direct** is a family-owned, sheet metal fabrication business located in Wrightstown, Wisconsin. Their new 22,500 square foot manufacturing facility features 40mm THERMOCLICK™ clear panels on the buildings north and south sides. The owner chose THERMOCLICK™ panels for the new facility because he wanted the maximum amount of natural light coming in, minimizing the need for artificial lighting." ([Read full article](#))



**The DOGG House** is an eco-friendly travel trailer built entirely out of sustainable materials that can be either recycled or repurposed. The sides and back of this unique travel trailer are clad with 40mm THERMOCLICK™ opal panels, allowing daylight in while still providing occupants with needed privacy. THERMOCLICK™ was an excellent material choice for this project because of its low environmental impact. ([Read full article](#))

**Jasper Place Bowl Stadium** is a sports facility located within a suburban park in Edmonton, AB, Canada. The angled wall elements of the grandstand are covered in copper panels and 40mm THERMOCLICK™ opal panels. These high-performance panels offer excellent impact strength and breakage resistance from flying balls or other projectiles, making it an ideal facade choice for this application. ([Read full article](#))



**Rol-Tec Inc.** started in a garage in 1991 and has since grown into one of the most well-rounded, highest tech



roller facilities of its kind. A recent plant expansion at their Green Bay headquarters included installing 40mm THERMOCLICK™ panels along the top of the walls. The clear panels allow natural light to filter into the work area below. There are times when the sun is coming in and they can actually turn off the lights. There's that much light coming in! ([Read full article](#))

**Shine Express Auto Wash** in Lexington, Kentucky is a great example of a building designed with polycarbonate panels that is both functional and visually striking. The 40mm THERMOCLICK™ clear polycarbonate panels provide superb thermal insulation properties as well as soft, diffused natural lighting. The interior accent lighting that shines through the polycarbonate transoms at night creates an eye-catching glow. ([Read full article](#))



Beyond its outstanding physical characteristics, LEXAN™ THERMOCLICK™ panels offer architects, designers, and builders an array of aesthetic opportunities — from energy efficient facades to light-filled interior spaces. An excellent glazing option for residential, commercial, and industrial applications.

---

*If you would like to learn more about the benefits of LEXAN™ THERMOCLICK™, please visit our [website](#) or call 888-602-4441 to speak to a friendly member of the A-Team today.*

*LEXAN THERMOCLICK is a trademark of SABIC.*

---

## Featured Product

### LEXAN™ THERMOCLICK™

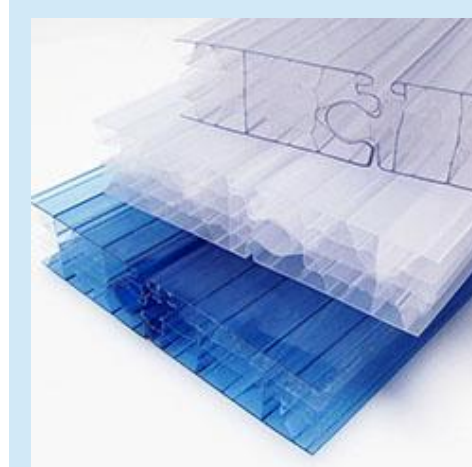
LEXAN™ THERMOCLICK™ interlocking polycarbonate sheets are impact resistant, energy-saving multiwall sheets with a specially designed tongue and groove connection. This inter-connecting system eliminates the need for vertical profiles, thereby saving costs and enhancing aesthetics.

- UV Protected Outer Surface
- Good Light Transmission & Diffusion
- Superb Thermal Insulation Properties
- High Impact Strength & Breakage Resistance
- Simple, Fast, & Easy On-Site Installation

Stocked in clear, opal and blue, these high-performance polycarbonate sheets allow for architectural designs that are visually striking yet extremely practical. LEXAN™ THERMOCLICK™ is stocked in 40mm and is also available in a 50mm\* thickness.

*\*LEXAN™ THERMOCLICK™ 50mm is a special order sheet only. Project based with a minimum order quantity of 31,600 square feet. Lead times are based on manufacturer's production schedule.*

*LEXAN THERMOCLICK is a trademark of SABIC.*



*LEXAN™ THERMOCLICK™ provides the building and construction industry with a glazing material that meets the demand for increased energy efficiency and is an excellent alternative to glass facades.*

[Visit Product Page](#)

## DIY Tip of the Month

### Polycarbonate Portable Ice Shanty

Are you looking forward to doing some ice fishing this winter but maybe not the weather that comes with it? Cold, wet, windy days can take the fun out of fishing through a hole in the middle of a frozen lake.



Stay warm and comfortable in a portable shelter! Building a fishing shanty is a fairly simple DIY project that will provide protection from nature's frigid elements and help you stay out longer on the ice.



Depending on your budget, an ice fishing house can be built out of a number of different materials from plywood to repurposed building materials.

Size, height, and weight should all be taken into consideration.

Durable, lightweight, and easy to install, corrugated polycarbonate panels are a great option for the windows or siding, offering peripheral views for monitoring tip-ups and weather conditions.

Before it's time to hit the ice this season, build yourself a portable ice shanty. Who knows? You might even catch more fish!



**Q:** What is the difference between roof 'pitch' and 'slope'?

**A.** Roof 'pitch' or 'slope' is the angle (steepness) of a roof. In the roofing industry, pitch and slope are often used interchangeably but they are technically different.

Mathematically, roof pitch is a different calculation than roof slope. Pitch compares a roof's span to the rise while slope compares rise and run. Understanding the subtle difference between span and run is important.

Pitch is the incline of a roof and is derived by dividing the rise (vertical distance from one point of the roof to its highest point) by the span (the distance between outside walls). Pitch is expressed as a fraction. For example, a roof with a rise of 4-feet and a span of 24-feet (4/24) would represent a 1/6 pitch.

Slope is also the incline of a roof, but it is derived by dividing the vertical rise (per foot) by the horizontal run. (In roofing, the run is the distance from the roof's ridge (or peak) to the exterior wall.) Slope is expressed as a ratio in inches. For example, a roof with a 4-inch rise for every 12-inches of run would look like: 4:12.

[More FAQs](#)

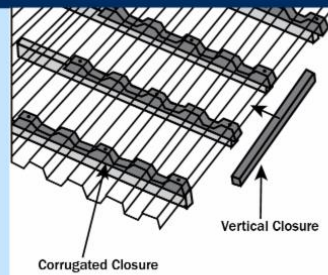
## Polycarbonate Roofing: Precut Foam Closure Strips

## Benefits of Foam Closure Strips



Foam closure strips seal the opening created where the corrugated panel meets flat surfaces at flashing, curbs, girts, etc. Used as fastener supports, foam closure strips enhance the appearance of corrugated polycarbonate panels, provide weather tightness, and help prevent leaks. Closure strips are easy to install and deliver a compression fit.

The foam closure strip needed is based on the corrugated panel used for the specific application. Foam closures have an inside and outside strip. Inside strips can be attached directly to the purlins and are used to seal. Outside strips are used on top of the panel and under flashing and ridge caps. Always check the corrugated panel and closure strips for proper fit.



### Benefits of Foam Closure Strips

- Greca – Use w/ Greca Corrugated
- MR9 – Use w/ MR9” Corrugated
- MR12 – Use w/ MR12” Corrugated
- Vertical – Use w/ all Corrugated Panel

## Links of Interest

- [Apartments, malls, and residential homes in Kenya are shifting to polycarbonate ‘plastic’ roofs and may soon become the main type of roofing system.](#)
- [Located in the Children’s Park in Shenzhen, China, the Four-Roof Pavilion massive roof is covered with clear polycarbonate panels and perforated metal and solid surfaces.](#)
- [Behind the sales counter of the new On-OFF retail store in Milan, Italy is a backlight end wall clad with alternating polycarbonate panels and structural metal.](#)

## Company Highlights

### Meet the A-Team

Employee Spotlight | Isaac Wysocki

Prior to joining AmeriLux in August of 2022, Isaac worked at his family’s potato farm in Bancroft, Wisconsin. He brings valuable experience and knowledge in data analytics and information technology to the A-Team.

While living in Green Bay during college, Isaac really came to like the area and how much there is to do here. “I really wanted to work at a place that gives back to this awesome community and a place that has a good culture.”

As a Business Intelligence Analyst, Isaac assists the AmeriLux Transportation and Logistics division by creating reports and dashboards, providing important data for critical decision-making. He enjoys collaborating with team members and tackling challenges together.

When asked how he would define the culture at AmeriLux, Isaac had this response: “It’s like being part of a big, supportive family. We’re all in it together, looking out for each other, and working toward the same goals. It’s not just about the tasks; it’s about genuinely caring for each other.



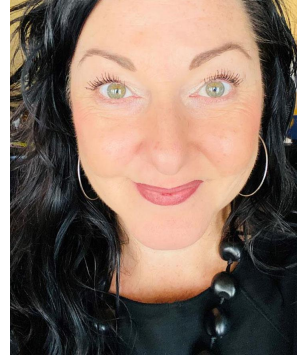
*“Business Intelligence is the use of data to make well informed decisions.”*

## November's Culture Statement

"Is This A Great Country, Or What..?!"

We celebrate our freedom and opportunity and look to the future with optimism. We believe in the power of happiness and positivity to produce outstanding results. We are intentional about cultivating creativity and innovation through optimistic, positive thinking.

**November's Brand Ambassador:**  
Lisa Clayworth, Account Manager - EZ PVC



How We Succeed at AmeriLux

## A Month of Thanksgiving

Everyone knows Thanksgiving Day is a national United States holiday celebrated in November. But did you know November is also National Gratitude Month?

National Gratitude Month encourages all of us to practice daily gratitude. To reflect on what we're thankful for in our lives, shifting our focus from the negative to what is positive. Studies have shown 'an attitude of gratitude' improves one's mood, invites joy into our lives, creates an optimistic attitude, and deepens life satisfaction.



"Gratitude can transform common days into Thanksgiving, turn routine jobs into joy, and change ordinary opportunities into blessings."  
William Arthur Ward

## The AmeriLux Family of Companies

[AmeriLux International](#)  
[AmeriLux Transportation & Logistics](#)  
[Shape Products](#)



AmeriLux International LLC | 1300 Enterprise Drive, De Pere, WI 54115

[Unsubscribe cgeiger@ameriluxinternational.com](mailto:cgeiger@ameriluxinternational.com)

[Update Profile](#) | [Constant Contact Data Notice](#)

Sent by [richards@ameriluxinternational.com](mailto:richards@ameriluxinternational.com) powered by



Try email marketing for free today!