

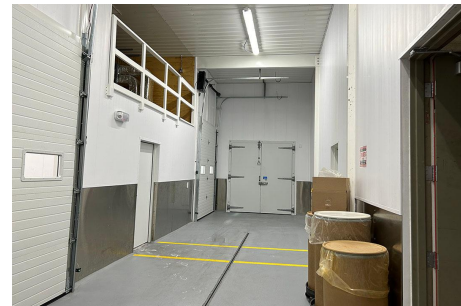
## Salmon's New Production Facility "Importance of Hygiene and Sanitation"



Located in beautiful Luxemburg, Wisconsin, Salmon's Meat Products was established in 1966 and continues to carry on the original family's meat processing traditions that date back to 1915. This great all-American company has been providing Northeastern Wisconsin with incredibly delicious smoked meat products for nearly 100 years.

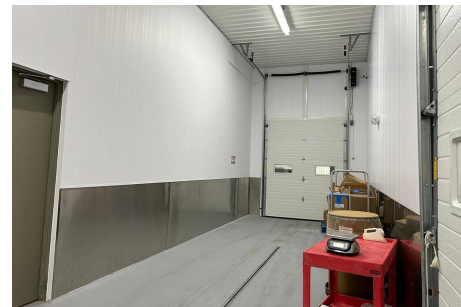
Steeped in generational history, Salmon's Meat Products continues to expand and grow its product offering. Increased production requires more space, so construction began on a new 12,000 square foot facility in the fall of 2023. "We were running out of space in the old building and using box trucks for refrigeration," explained Plant Manager Josh Delebreaux. "This new facility definitely gives us room to grow."

As with any food processing facility, maintaining cleanliness and sanitation is extremely crucial. The interior walls of Salmon's original buildings were lined with a gypsum type 'milk' board. These drywall white boards were seamed and riveted into place. "The boards were cheap, hard to clean, and they discolored over time," Josh said. "The smoke house, well, it's nasty. It looks bad."



The new production facility was built with hygiene, sanitation, and food safety in mind. The ceiling is lined with white aluminum corrugated panels. The lower portion of the walls are clad in stainless steel while the upper portion features EZ Liner® PVC interlocking liner panels.

Perfect for a demanding application like this, the surface of the EZ Liner® panel is highly resistant to moisture, mold, corrosion, and most chemicals. The flat, smooth surface is low maintenance and easy to clean. When asked what he liked most about the product, Josh had this to say, "Its cleanability! The panels are easy to power wash. In our cooler room, we just use a little foam degreaser and spray the panels down."



The panel's ultra white color helps to brighten up the interior rooms of the production facility. Since the EZ Liner® panel never needs to be painted, upkeep costs are reduced considerably. "In rooms without windows, the panels help to reflect the artificial lighting," Josh said. "To me, it's just clean looking. I

really like the cleanliness of how it looks.”

Designed for strength and impact resistance, the EZ Liner® panels all-weather interlocking system allows for expansion and contraction due to temperature change for an always seamless appearance. An ideal building material choice for changing indoor environment conditions. “The panels abuse well, said Josh. “As long as you’re not running right into it, it’s pretty durable!”

EZ Liner® panels are lightweight and simple to work with. They also require no special training or tools to install. The panel’s pre-slotted nailing flange and interlocking tongue and groove design make installation quick and easy. According to Josh the installation of the PVC liner panels went really fast.

“We’re finally settled into our new facility, and it is nice to have everything at one location. We definitely have some cooler space now!”



*To learn more about the advantages of using [EZ Liner® PVC Interlocking Liner Panels](#) for your next project, please call 888-602-4441 to speak to a knowledgeable member of the AmeriLux A-Team.*

## Featured Product

### Agrilite™ PVC Corrugated Liner Panel

Light in weight, Agrilite™ is a durable corrugated PVC liner panel that is highly resistant to impact and most chemicals. These wall and ceiling panels are virtually indestructible and are ideal for the most demanding agricultural, industrial, and commercial applications.

- Bright White, Reflective Finish
- Easy-to-Clean, Smooth Surface
- Non-Flammable & Rust Proof
- Resists Marking & Scratching
- Economical & Low Maintenance

Easy to handle, install, and maintain, Agrilite™ PVC panels will not rot, corrode, develop structural cracks, or require refinishing if kept reasonably clean of dirt and debris. Also available: Agrilite™ PVC profiles for a finished, professional look to your project.



*Agrilite™ PVC  
corrugated liner panels  
are a cost-effective  
alternative to metal.*

[Visit Product Page](#)

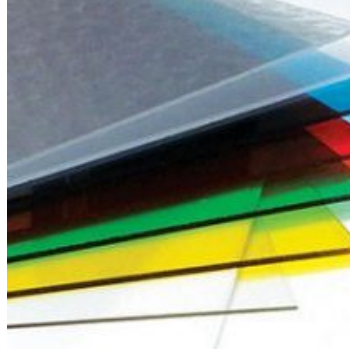
## DIY Tip of the Month

### Plastic Sheets for Any Project

AmeriLux stocks a large selection of cut-to-size plastic sheet products in various colors, thicknesses, and sizes.

## Cutting PVC Panels

These high-quality plastic sheets are an ideal material choice for a variety of do-it-yourself and home repair projects as well as unlimited arts and crafts projects.



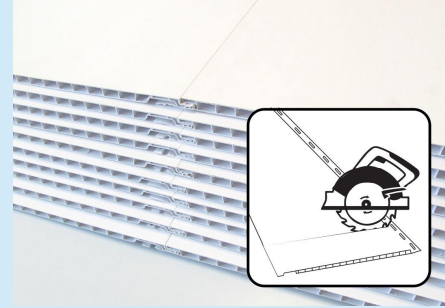
- Custom Picture Frames
- Cabinet & Door inserts
- Decorative Wall Shelves
- Replacement Windowpanes
- Yard & Garage Sale Signs
- Custom Cutting Boards



Our inventory includes clear and colored acrylic sheets, clear solid polycarbonate sheets, fluted polypropylene sheets, and HDPE sheeting.



Not sure which plastic sheet is right for your next project? Please send an email inquiry to [info@amerilux.com](mailto:info@amerilux.com) for more product information.



**Q:** What is the recommended method for cutting PVC Liner Panels?

**A.** PVC liner panels can be fabricated on-site and require no special tools or training to install. To cut panels to size, use a circular saw with a fine-tooth blade (12 to 16 teeth per inch) installed in the reverse direction (mounted backwards). Avoid coarse-toothed blades.

Cut on a flat and sturdy surface with the face of the panel facing downward. Use a ruler to make a straight-lined mark to follow. Move the saw slowly to prevent overheating or chipping. Maintain even pressure while cutting, especially when completing a cut. Always do a test cut first to make sure your blade is cutting cleanly.

[More FAQs](#)

## Polycarbonate & PVC Panels for Farm Buildings

### Agricultural Applications



#### Impressive Features of PVC and Polycarbonate

Both PVC liner panels and polycarbonate sheets are well suited for the agricultural market.

PVC liner panels are versatile and easy to install. Remarkably durable, the panels will not dent due to high traffic from equipment, workers, or animals. They can be easily cleaned with conventional spray equipment, making the panels a low maintenance choice in even the messiest applications.

Translucent and featuring light diffusion properties, polycarbonate can be used to let in comfortable daylight for people and farm animals. The impressive durability of the sheets means that they will maintain their integrity for years to come.

#### Suitable Agricultural Applications



Agrilite PVC-Lined Dairy Building



Clear Polycarbonate Ridge Skylight



Bronze Polycarbonate Barn Glazing

Additional agricultural applications include:

- Hog Barns
- Salt Storage
- Poultry Shelters
- Storage Buildings
- Kennels
- Meat Packing
- Fertilizer Storage
- Food Processing

## Links of Interest

- [Once a former candy factory, this old production plant in northern Italy was](#)

transformed into a community center with an upper level covered with polycarbonate walls.

- The Nursery at Public Records in Brooklyn, New York is an outdoor space for both humans and plants, featuring reimagined storage units clad with wooden trusses and polycarbonate panels.
- Selected because they are durable, available, and affordable, plywood and polycarbonate panels were used to build a compact coffee shop in a residential neighborhood in Indonesia.

## Company Highlights

### Celebrating 20 Years!

This month, AmeriLux International celebrated its 20th anniversary with a memorable A-Team Week and anniversary party. The week was packed with various activities, including delicious food, games, raffles, and gifts. The celebrations wrapped up on Saturday with a party for employees and their families, featuring mini golf, bounce houses, face painting, balloon animals, and more.



The event was a great way for all AmeriLux employees to come together and celebrate a milestone that everyone had a part in achieving. The feedback from the team was overwhelmingly positive, with many appreciating the opportunity to connect and create lasting memories.



A-Team Week and the 20-Year Anniversary party was a huge success and a fantastic celebration for AmeriLux. Thank you to all the employees, suppliers, and vendors who are a part of AmeriLux's success and allowed us the chance to celebrate 20-Years of business.



*"The company party was fantastic and did a good job to provide variety — music, beer, pizza, snow cones, mini golf, bounce house, and face painting... seriously we made some good memories. Thank you!"*

### Meet the A-Team

Employee Spotlight | Dean Frank

Bringing with him a wealth of experience and knowledge in supply chain, inventory management, and demand planning, Dean Frank joined the A-Team in September of 2023.

As a Sales and Demand Planning Manager, Dean is responsible for developing and executing demand forecasts that will help AmeriLux International achieve its retail sales, profit, and inventory goals. He enjoys digging into data and looking for opportunities to improve sales.

When asked which of the AmeriLux culture statements he

related to the most, Dean responded by saying they all have great qualities that drive our success, but the one he identifies with the most is 'WIN-WIN' — every sustainable relationship, personal and professional, must be based on win-win for all parties.

“By embracing a WIN-WIN idea we can build long term relationships with our internal and external partners.” Dean went on to say that “helping our customers win and be profitable will help our company, employees and vendors grow and remain strong and viable for our future growth.”



*"I enjoy digging into data and looking for opportunities to improve sales."*

## "Conflict is A Good Thing"



"We value diverse thinking and speak openly with each other. We don't keep a false peace by avoiding difficult conversations but speak our truth kindly. We intentionally wrestle with ideas to find the best way to "do the right things" and "do things right." We hold all stakeholders into decisions that concern them, and ensure every voice is heard."

**July's Brand Ambassador: Matt Knutson**  
Driver Manager - AmeriLux Logistics

How We Succeed at AmeriLux

### The AmeriLux Family of Companies

[AmeriLux International](#)

[AmeriLux Transportation & Logistics](#)

[Shape Products](#)

[EZ PVC](#)



AmeriLux International LLC | 1300 Enterprise Drive | De Pere, WI 54115 US

[Unsubscribe](#) | [Update Profile](#) | [Constant Contact Data Notice](#)



Try email marketing for free today!